

Version 7.6.0 Release Notes

1. **Record and Analyze Piglets Euthanized:** In the Piglet Death event you are now able to record when a piglet is euthanized and why.

To help with validation while doing data entry we have included an additional item on the summary data panel, Piglets Euthanized under the Farrowings category, and when you view a sow history you will find the piglets euthanized detail listed in her events. We have also added a new section to the data entry trace that will list all piglet deaths that were euthanized as its own section.

To analyze this data, in the Performance type reports we have expanded the Piglets Loss section to include breakouts on the number of piglets euthanized and the piglets age at time of death.

The Piglet Loss Analysis report is the go to report when looking at piglet deaths and you can now include or exclude those piglets that were euthanized from the graphical results.

2. **Performance Reports Quarter Calendar Options:** We have added a new pre-defined period length that represents true calendar quarters available for selection in both the Grow-Finish and Reproductive performance type reports.

You will now have 2 types of quarter periods to select from, one based on farm date settings and the new option that is based on true calendar quarters as defined below.

- 1st Quarter – January, February, March (January 1 through March 31)
- 2nd Quarter – April, May, June (April 1 through June 30)
- 3rd Quarter – July, August, September (July 1 through September 30)
- 4th Quarter – October, November, December (October 1 through December 31)

We highly recommend replacing any customized reports set to 90-day periods for your quarter analysis with this new option for more accurate results.

You will find the new calendar quarter option available for selection in the following reports:

- Cohort Analysis (Services)
- Cohort Analysis (Farrow)
- Cohort Analysis (Wean)
- Performance Trend Analysis
- Productivity Analysis
- Herd Inventory (Reproductive and Grow-Finish)
- Closeout Analysis (by Period)
- Expenses (by Period)
- Feed Usage

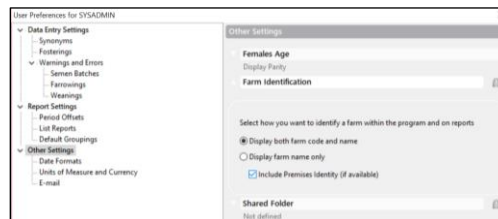
3. **Option to Resize Entry Screen:** With the various size monitors today, many of you have taken advantage of the ability to resize your screen display. To continue to expand on that ability we have had requests to be able to bring the view back to default without having to manually adjust each screen back.

Due to these requests we have added a new option found under Tools > Maintenance Tools > Tools Tab; that will easily reset all your data entry and reporting screens back to the program default with a click of a button.



4. **Premise Identity on Reports:** With the changes associated with new processes and regulations there has been a push in the industry to use the Premise Identifiers when communicating with your Veterinarian, Consultants and other industry partners. One of the ways communication occurs is via PigCHAMP reports, to help with providing this information you are now able to add the Premise Identity on your reports.

In your User Preferences > Other Settings > Farm Identification you can select how you want the farm identification to be displayed on the header of a report including the premise identification along with farm name and/or farm code.



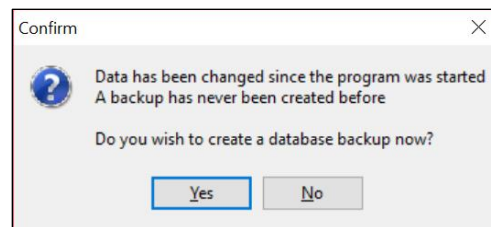
As a reminder you can associate a premise identity to a farm at any time by selecting the farm and then going to Farm and Farm Group Settings > Farm Identification

5. **POL RDP Connection Appearance:** Changes were made in Version 5.6.0 that caused some appearance issues within the PigCHAMP Online environment. To address this, we have added the ability to manage the font smoothing and display configuration for our PigCHAMP Online clients via RDP connection.

- Automated Backups:** It is recommended by our support staff that you frequently make backups of your PigCHAMP database to ensure your data is safe and secure if something happens to your computer. To help with this process for our PigCHAMP Standard clients we have enabled a feature that will automatically backup your database when you exit the program.

To turn this functionality on select Tools > Maintenance Tools > SQL Server Database and place a check mark in the box provided next to “Automatically backup the database when the program closes”.

When you close you program session you will be asked if you wish to create a backup at that time. Is yes, a backup will be created and saved in your PigCHAMP directory located under program files.



As a reminder you will want to save the backup file to an external device or directory to ensure the safety of the data.

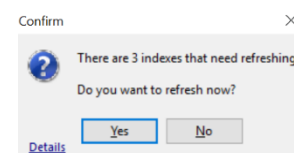
- Trace Data Highlight Selected Rows:** When analyzing your data many of you like to view the individual details related to the results using the data trace feature that is available in most reports. To enhance this ability, we have added a highlight feature when you select a cell in the trace list the entire row will be highlighted.

To enable this option in any report within a trace list select the arrow next to the report settings icon (cog and wheel) and select “highlight complete row”. Once set the program will maintain this setting whenever logged in.

- Automated Database Indexing:** To keep your program running at its best it is necessary to run standard maintenance against your database. To make this process easier and more efficient we have automated this process.

Like the backup feature, you can turn this feature on by selecting Tools > Maintenance Tools > SQL Server Database and place a check mark in the box provided next to “Check the state of the indexes once a week and update as necessary”.

When logging in, the program will analyze your database indexes and determine those that need to be refreshed. If a re-index is needed you will be prompted to refresh at that time, the process is done in the background and should not affect your daily activity.



9. **Grow Finish Stage of Production Required:** Many of you may be familiar or already participate in our free Benchmarking program for Reproductive. We are happy to announce that we are extending that to our Grow Finish clients starting in 2019.

To help with the comparisons for nursery and finishing sites we have made a change related to the "Stage of Production" for a barn. If you are creating a new barn you must select the stage of production prior to saving.

If the barn already exists we are asking that you edit the barn and select the appropriate stage from the provided drop options.

We have date and time stamped this logic with the plan to enable future enhancements to analysis reports within the program related to the stage of production a barn is assigned. You can alter the production stage at any time.

10. **Sow Card Option for Event Date Format:** We have expanded the sow card format options to include a new display that includes Event Dates.

This format displays the Farrowing and Weaning dates associated with each individual parity and now includes Totalborn. Average piglet weights, SPI (BVSP) and Wean Sub-standard are exclude from this format.

Within the Sow Card properties tab, you now have the option to select a standard template to be used there are 2 options currently available:

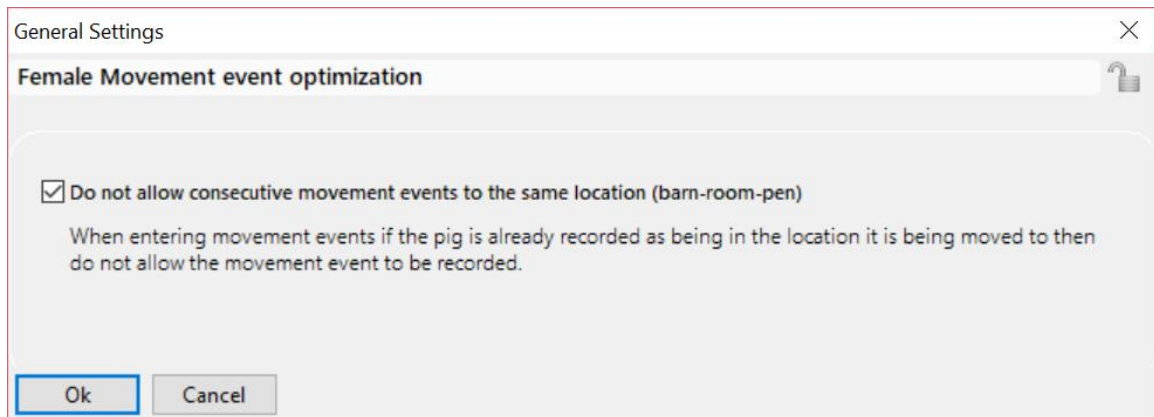
- Default > Original standard format
- Event Date > New available format, display below

8		Dam Genetics GEN10					Sire	
		Last Event	Complete	Weaning			Age (yrs)	Liveborn/Yr
		15-Apr-13					27.97	23.46
Cycle/Parity	6	7	8	9	10	Av.	11	
Boar/Semen x Genetics	3xMIX	3xMIX	2xMIX	2xMIX	2xMIX		2xGEN21	
Farrowing Interval	140	141	139	162	171	145.10	140	
Services/Matings	1/3	1/3	1/3	2/2	2/2	1.18	1/2	
Flags								
Gestation Length	115	115	115	115	115	115.5	115	
Farrow Date	03-Mar-11	22-Jul-11	08-Dec-11	18-May-12	05-Nov-12		25-Mar-13	
Total Born	15	13	12	14	14	13.00	12	
Liveborn	13	11	10	11	13	10.91	11	
Stillborn	2	2	2	2	1	2.00	1	
Mummified	0	0	0	1	0	0.09	0	*****
Weaning Date	24-Mar-11	11-Aug-11	26-Dec-11	11-Jun-12	26-Nov-12		15-Apr-13	* Marked *
Fostered On/Off	0/-3	0/0	0/0	0/0	0/-1		0/0	* to *
Piglet Losses	0	-3	0	-1	-3	-1.64	-2	* Cull *
Piglets Weaned	10	8	10	10	9	9.27	9	*****
Lactation Length	21	20	18	24	21	20.4	21	
Age at Weaning	21	20	18	24	21	20.5	21	

Boar/Semen(Genetics)[Operator] R1079 (GEN21) [02], R1075 (GEN21)
 Service Date 30-Nov-12 (Wk. 15)
 Due to Farrow on 25-Mar-13 (Wk. 32)
 21-day Action Date 21-Dec-12 (Wk. 18)
 35-day Action Date 04-Jan-13 (Wk. 20)

11. **Location Settings Option for Audits:** With the ever-changing industry we have found that many of our users like to record their locations for inventory proposes where others prefer to only record the movements maintaining that locations for all events until a new location is recorded.

For our customers that would like to use the location events for auditing the herd we have added the ability to record the same location for a single animal multiple times. To turn this feature on go to Settings > General Settings and uncheck the validation that is associated with the location. This will turn off the validation for duplicate location entries for all farms with in the database.



12. **Enterprise License Notifications:** For our Enterprise clients we have add the ability for you to manage who will receive the license notifications due to exceeding the number of females, pig placements as well as the renewal information.

By default, all users will continue to receive the notification including the SYSADMIN. Going to Users > User Account Administration > Select User > Database Tab > Uncheck the License Notifications option will disable the notifications for the selected user.

You may add the notifications back for a user at any time.

Mobile App Enhancements

For our PigCHAMP Online users that are using our new Mobile Apps we have some additional enhancements that are now available.

1. **Apps Available in Additional Languages:** We now have the Mobile Apps available in six (6) languages. When logging in to your app select your preferred language; once logged in all events, reports and search options will be displayed in the language selected. The App from that point on will maintain your preferred language.
 - Spanish EU
 - Spanish LA
 - French
 - Portuguese
 - Chinese
 - Italian
2. **Production Summary Report:** We have included a new report that will summarize the data that has been entered over a defined period including a single day. You will be provided with totals related to your services, farrowing, weaning and inventory.

Need Screen Shot

3. **Automatic Update Notifications:** As with many of our products we look to our customers (you) to help enhance the features and functionality to our commercial offerings. To make this process easier for the new Mobile App clients we have add the ability to notify you that updates are available via the App itself and automatically install any changes that are available.