

# Enterprise Edition Installation Guide

PIGCHAMP, LLC

## **Enterprise Edition Installation Guide**

January 2026 EDITION

# Table of Contents

Enterprise Server.....	3
Installation .....	3
Obtain a License: .....	6
Import a License:.....	6
Enterprise Client.....	7
Installation .....	7
Post Installation .....	7
Specifying the Server .....	7
Obtaining the IP Address of the Database Server .....	8
Troubleshooting.....	9
Error logging on to server .....	9
Determining if database/browser is started.....	9
Client will not connect to the server .....	10
Opening Firewall for Enterprise Client Windows 10.....	10
Opening the Firewall for Enterprise Server – Windows Server.....	10

---

# Enterprise Server Installation

PigCHAMP Enterprise consists of several portions of software: SQL database and the PigCHAMP application are required, though they do not need to be co-located on the same computer. There are also software modules that are optional: pdf995 driver, Scheduling Service, SQL Command Line Utilities and the PigCHAMP Backup and Restore Utility.

## Warning

The computer that hosts the database server needs to have a static IP address or use computer name for connection.

PigCHAMP software uses Microsoft SQL Server as its database. Depending on your operating system you will **manually install SQL prior** to running the PigCHAMP database server installation software.

You must have either the **SQL Installation file** or existing SQL software available before beginning the installation of the PigCHAMP Setup file.

**Note:** Windows XP, Windows Vista, and Windows 7 and 8 and any Windows Server version before 2012 are no longer supported by Microsoft or PigCHAMP.

**Note:** If you are installing Windows 11 or Windows Server 2022, you must manually install SQL 2017 or higher.

Downloadable files for installation:

- SQL Setup File: You will be required to choose the language and version of program you need to download: SQLEXPRESS\_x86 for 32-bit or SQLEXPRESS\_x64 for 64-bit operating systems.
- SQL 2017 Express: <https://www.microsoft.com/en-us/download/details.aspx?id=55994>
- Instructions to manually install SQL Express can be found here: <https://pigchamp.crmdesk.com>
- PigCHAMP Setup File (works for client, database server): <http://www.pigchamp.com/downloads>.

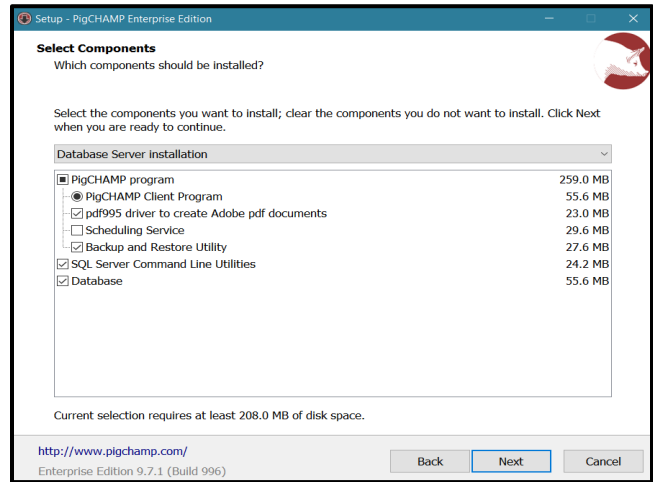
PigCHAMP software uses Microsoft SQL Server as its database. You must have either the **SQL Installation file (installed)** or existing SQL software available before beginning the installation of the PigCHAMP Setup file. Links to SQL configuration/installation instructions and SQL downloads available above.

During the installation process, you will be presented with several screens. You can choose the back button to change your settings at any time during setup. At the end of the process, you will be presented with a list of the configuration you have chosen before performing the installation.

The first screens start the installation, set the installation language, ask you to accept the End User Licensing Agreement (EULA), and allow you to choose where to install the PigCHAMP software. You must accept the EULA to proceed with the installation.

**Select Components** screen will allow you to set up the software on the database server.

Here, you get to choose which software modules to install. Following is a brief overview of the items you see on this screen and what they are:



1. Static Client – PigCHAMP application software. Application software can be installed on the same computer as the database but is not required. The local temporary reporting database is an option for the client computers connected to PigCHAMP. It should not be selected for the database server installation.
2. pdf995 driver to create Adobe pdf documents – a third-party software printer driver that allows saving and emailing of reports directly from the PigCHAMP program as pdf documents. Used if Microsoft Print to PDF option is not available.
3. Scheduling Service - currently used for specific interfaces. Do not check unless instructed by PigCHAMP to do so.
4. Backup and Restore Utility – Graphical interface that allows backup of PigCHAMP database for protection of data. This should be installed if there is no other SQL backup plan already in place.
5. SQL Server Command Line Utilities – basic package of SQL command executables including bcp.exe to allow import/export of pcf4 data files to/from the PigCHAMP program.
6. Database – Microsoft SQL database where the PigCHAMP data will be stored. Can be any version of Microsoft SQL (version 2014 or higher) including Express.

The default installation for Database Server will install static client software, pdf995 driver, SQL Command Line Utilities, PigCHAMP Backup and Restore Utility, and the database. If you change any of these settings, the dropdown box will change to Custom

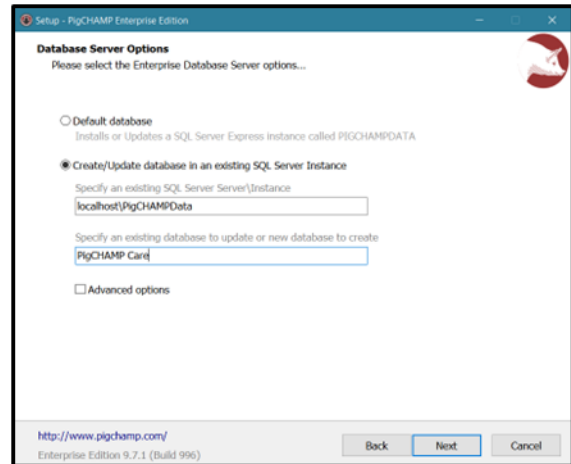
installation.

You can choose the Start Menu folder for PigCHAMP. It will default to PigCHAMP.

The **Database Server Options** screen allows you to choose how you want to install the database.

Using an existing SQL instance, fill out the data for the bottom option.

You can choose to install the database files on a different computer than the one running the PigCHAMP application, or they can reside on the same computer.



On the server\instance line, the server name will be the name or IP address of the computer where the database files reside.

If you are installing the database on the local computer, you can use localhost for the computer name. To use a default unnamed instance, the server\instance line will just contain the server (localhost, IP or computer name of the database server). If you installed SQL using the PigCHAMP instructions, the instance will be PigCHAMPData.

You may choose the top option – default database. This will verify the SQL manually installed has the PIGCHAMPDATA instance and will create a database called PigCHAMP Care.

**Note:** The **Advanced Options** checkbox also gives access to the option to store Unicode text fields and choose the SQL recovery model.

If the Store Unicode Text box is checked, it means that data will be stored in the database in NVARCHAR format. This will increase the size of the database since NVARCHAR data takes up more space than VARCHAR data (the default setting). This setting is only needed if using non-Latin based graphical characters such as Russian, Chinese, Japanese, etc. that need to be displayed in the data text fields (farm name, etc.).

Choose Simple Recovery mode unless you automatically manage your SQL backups through SQL Management Studio.

If SQL has not been previously installed, the PigCHAMP Setup program will check the version of operating system (32-bit or 64-bit) and ask for the location of SQLEXPRT that it needs to install. Use the Browse button to locate the SQL file that you downloaded.

If all necessary components were not installed on the database server (static client, SQL database); you must run the installation program again on various computers on the network, choosing the components to be installed at each location.

After the necessary components are installed on the network, you must license the PigCHAMP application.

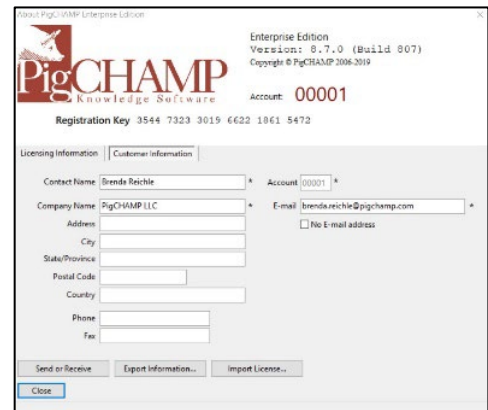
**Obtain a License:**

To register the software, you will need to get a license for PigCHAMP.

- Open the PigCHAMP program
- Login to the program using either an existing login or the initial login information below:

Username: **SYSADMIN**  
 Password: **SYSADMIN**

- Click the OK button on the licensing dialog. The following screen will appear. (If the program is already licensed and this does not appear, go to Help > About to open the Registration page.)
- Click on the “Customer Information” tab and fill out the information on that page. (Sections with an asterisk (\*) are required.)



- Click on “Registration/Licensing Information” tab. If this computer is connected to the internet, click on the “**Send or Receive**” button. This will send an automatic license request to PigCHAMP. The user will receive an email notification to the email specified on the Customer Information tab when the license has been processed.

- If the computer does not have internet access click on the “**Export Information**” button and save the registration file. Copy the file to an external storage device and take it to a source with internet access.

Send an e-mail to [reg@pigchamp.com](mailto:reg@pigchamp.com) with the registration file attached in order to obtain a valid license for the program.

**Note: Licenses will only be processed during regular business hours.**  
 Monday through Friday 8 a.m. to 5 p.m. CST, excluding US holidays.

**Import a License:**

Once notification is received that the license is ready, import the license.

- If not already open, launch PigCHAMP program
- If the internet option for licensing was used, click on the “**Send or Receive**” button again. The license will be automatically imported.
- If license was e-mailed; import the licensing file by Clicking on the “**Import License**” button > navigate to the registration file received from PigCHAMP, and then click Open.

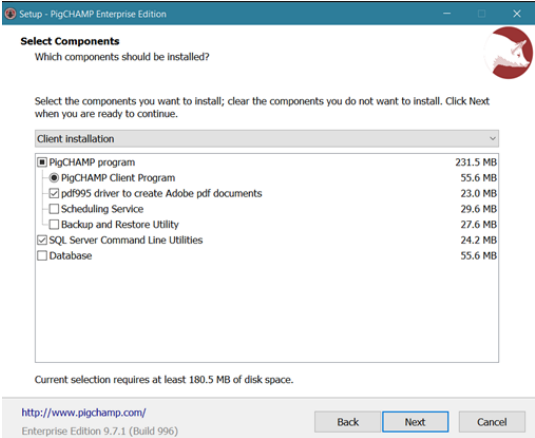
# Enterprise Client Installation

Enterprise client may be installed on multiple computers. Each computer will connect to a single enterprise server database to access shared farm data stored on the database server. No data is stored locally on the client computer.

On the Select Components screen, choose Client installation.

During installation, a local instance of SQL Server Native Client will be installed along with PigCHAMP software.

A local copy of PDF995 may be installed with the Client Software. This is a 3<sup>rd</sup> party software that will be used to generate reports in PDF format to be saved or e-mailed. It will only be used if Microsoft Print to PDF driver (installed with Windows 10 or higher is not present).

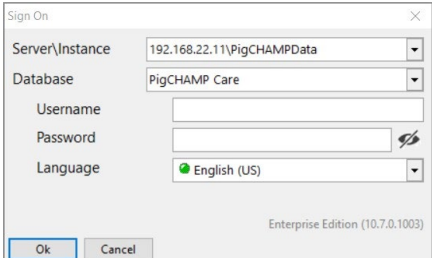
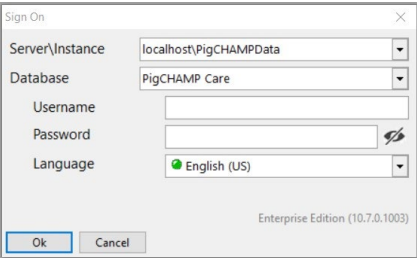


## Post Installation

Once the installation is complete there are a few steps you will need to do in order to connect to the database server.

### Specifying the Server

When you first start a client program you will need to specify login credentials and the server\instance that you will log into. The server can be specified as either a hostname or IP Address, as shown below. For a default unnamed instance, use only the server name (no instance).



If you do not have a username and password, contact your server administrator. The defaults for first-time use are:

- Username: **SYSADMIN** (must be in all capital letters)
- Password: **SYSADMIN** (must be in all capital letters)

## Obtaining the IP Address of the Database Server

The below instructions must be done on the server, not on a client.

- In the Search box, type **cmd** and choose Command Prompt.
- In the window that comes up type **ipconfig** and press **enter**.
- You should see output like the screenshot below. Write down the number and period sequence next to **IP Address**. In the example below it would be 192.168.33.234.

```

Ethernet adapter Wireless Network Connection:

    Connection-specific DNS Suffix . : farms.net
    IP Address. . . . . : 192.168.33.234
    Subnet Mask . . . . . : 255.255.255.0
    Default Gateway . . . . . : 192.168.33.1
    
```

- Now go to the client computer and enter in IP address\Instance Name into the textbox, then press OK (ex: 192.168.33.234\PigCHAMPData).

**Note:** If you use the IP address to connect to the server, that IP address must be static. If you have dynamically assigned IP addresses on your network, use the server name to connect.

If you are experiencing any issues refer to the troubleshooting section or contact PigCHAMP Technical Support at [techsupport@pigchamp.com](mailto:techsupport@pigchamp.com)

# Troubleshooting

If you are having any issues with the installation this section will do its best to help you resolve them. If your issues are still not resolved after reading this chapter please contact PigCHAMP Technical Support and we will be happy to assist you.

## Error logging on to server

If you followed the server installation instructions but receive an “Invalid Connection String Attribute” error or “Cannot find the server\instance” error when trying to log on to PigCHAMP from the server, it means that the PigCHAMP software cannot access the database for some reason.

### Determining if database/browser is started

To determine if the database instance is started:

- Go to **Control Panel > Administrative Tools > Computer Management > Services and Applications > SQL Server Configuration Manager**.
- Click on **SQL Server Services**. This will show what services are running.
- The instance used for PigCHAMP must be running as well as SQL Browser. The default named instance for PigCHAMP is PigCHAMPData, though this may be changed during installation if using a previously installed instance of SQL Server.
  - If PigCHAMPDATA (or correct instance) is not running, start it by right-clicking on the instance name and choosing **Start**.
    - If the instance will not start, you may have to change the logon account by right-clicking on the instance name, choosing **Properties > Log On** tab and changing the logon account to **Built-in Account: Local System**.
  - If SQL Browser is not running, right-click on it and select **Start**.
    - If it is disabled, you must enable it by right-clicking on SQL Browser, choose **Properties > Service** tab. Change the Start **Mode** dropdown to **Automatic**.

## Client will not connect to the server

If you followed the client installation instructions but continue to get a dialog indicating it cannot connect to the server there may be a firewall enabled on the server and/or client that is causing the issue. The error “Invalid Connection String Attribute” or “Cannot find server\instance” means the PigCHAMP application cannot connect to the SQL database.

### Opening Firewall for Enterprise Client Windows 10

1. Go to Control Panel
  - a. If Control Panel is being viewed by Category:
    - i. Click System and Security.
    - ii. Click “Windows Defender Firewall”
    - iii. On the upper left hand side click “Allow an app or feature through Windows Defender Firewall.”
  - b. If Control Panel is being viewed by icons:
    - i. Click Windows Defender Firewall.
    - ii. On the upper left hand side click “Allow an app or feature through Windows Defender Firewall.”
2. Click on Change Settings then “Allow another app...”
3. Click Browse, browse to Computer > Local Disk C: > Program Files (x86) > Microsoft SQL Server > 90 > Shared. Click on sqlbrowser.exe and click Open.
  - a. Note: Other versions of SQL may have moved this file to a different folder – search to find sqlbrowser.exe if needed
4. Click Add.
5. Click on “Allow another program...”
6. Click Browse, browse to Computer > Local Disk C: > Program Files > Microsoft SQL Server > MSSQL12.PIGCHAMPDATA > MSSQL > Binn. Click sqlservr.exe and click Open.
  - a. Note: Other versions of SQL may have moved this file to a different folder – search to find sqlservr.exe if needed
7. Click Add.

The “Allowed programs and features:” should now have SQL Browser Service EXE and SQL Server Windows NT options listed and checked.

### Opening the Firewall for Enterprise Server – Windows Server

Each version of Windows Server handles firewalls a bit differently. Please consult Microsoft Knowledge Base and technical articles to open firewall ports on Windows Server operating systems for SQL.