

PigCHAMP Mobile for Apple Beta Testers Installation and User Guide



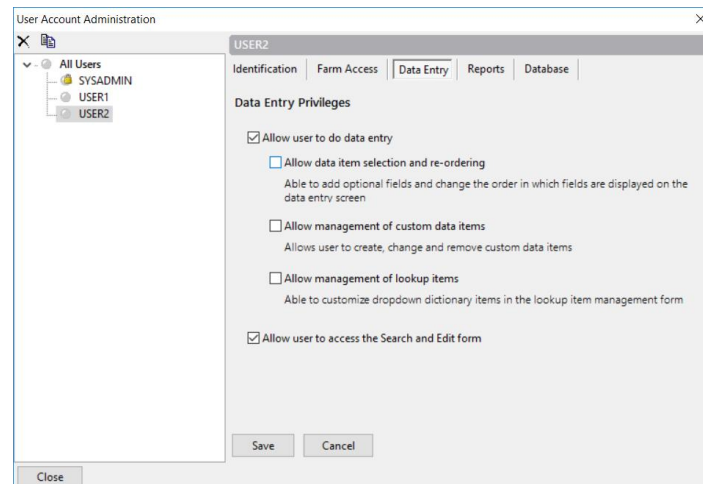
Setting up your account in PigCHAMP Online

Once beta begins, an e-mail will be sent that contains your assigned username(s).

Prior to allowing access you must first create your user accounts within your PigCHAMP Online database.

Login into PigCHAMP Online as SYSADMIN; go to **Users > User Account Administration**

1. Enter the username assigned from e-mail
 - a. Create a new user or change an existing user by entering the username provided on the identification tab.
 - b. Username must match the e-mail exactly
2. Create a password of your choosing
 - a. Existing users may maintain their current password if they choose
3. Select Data Entry tab; Assign data entry privilege to all users
 - a. Allow user to do data entry *must be* checked
 - b. Allow user to access the Search and Edit form *must be* checked
 - c. Additional fields are optional and do not apply to the Mobile system
4. Assign Farm Access, if multiple farms are available
 - a. Select specific farm(s) the user is to be assigned to
 - b. A user may be assigned to multiple farms
5. Repeat steps for all mobile users

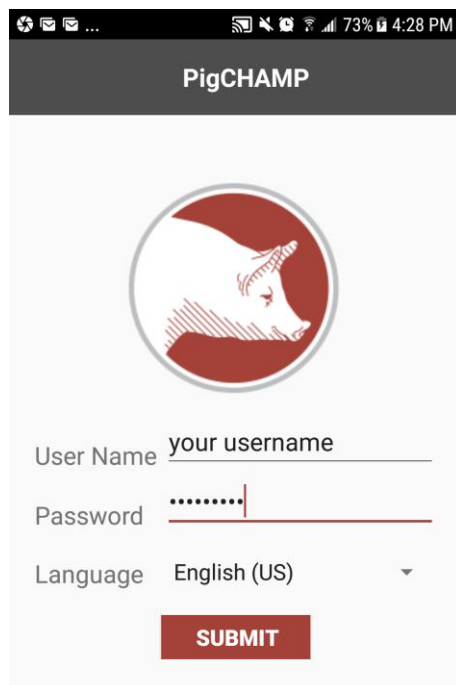


Log In

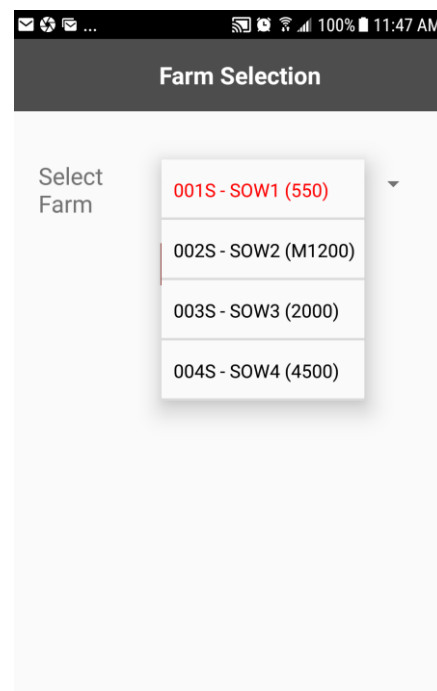
After PigCHAMP Mobile is installed, you will find a new icon available called PigCHAMP.

1. Open App
2. Enter your username and password
Note: Username and password must match those entered in PigCHAMP Online exactly
3. Select your language preference
4. Once submitted, you will be taken directly to the data entry menu

If you have more than one farm, you will first need to choose which farm you want to work with before going to the data entry menu.



The screenshot shows the PigCHAMP mobile app login screen. At the top, the status bar shows 73% battery and 4:28 PM. The app title "PigCHAMP" is centered at the top. Below the title is a circular logo featuring a pig's head. Underneath the logo are three input fields: "User Name" with the placeholder text "your username", "Password" with masked characters ".....", and "Language" with "English (US)" selected. A red "SUBMIT" button is located at the bottom.



The screenshot shows the "Farm Selection" screen in the PigCHAMP mobile app. The status bar at the top shows 100% battery and 11:47 AM. The title "Farm Selection" is centered at the top. Below the title is a "Select Farm" label and a dropdown menu. The dropdown menu is open, showing four options: "001S - SOW1 (550)", "002S - SOW2 (M1200)", "003S - SOW3 (2000)", and "004S - SOW4 (4500)".

Note: Unable to be logged in to both the mobile app and online account simultaneously.

Main Menu

From any screen, you can navigate to other activities by tapping the Main Menu icon in the top right corner of the application.

From here you can choose to go to Data Entry, Reports, Search, Help, About and Logout.

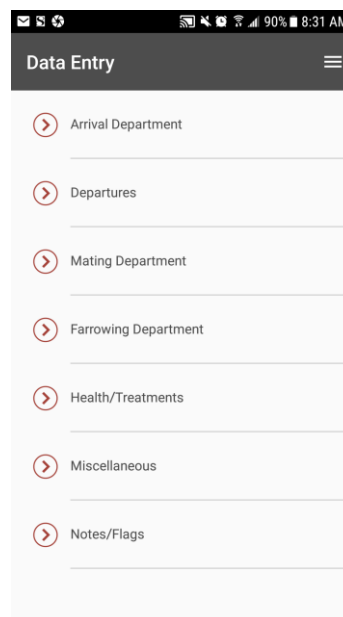
Note: For the Beta Test period, the Help Section will not provide any help files. It is programmed to only take you to the home page of the PigCHAMP website. Help files will be added after we receive feedback from the beta test.

Data Entry

The data entry menu is organized much like the PigCHAMP Online program with several data entry screens conveniently organized into “departments”.

For example, data entry screens under the Farrowing Department include:

- Farrowing
- Fostering
- Part Weaning
- Complete Weaning
- Batch Weaning
- Nurse Sow Wean
- Piglet Death



Select the event type to open the specific data entry screen then fill in the appropriate information for the event fields.

Note: The field selection and field order mirror the specific event within the PigCHAMP Online program. If you wish to alter and/or add additional fields this may be done using the Data Item Management tool, please see the PigCHAMP Help Files (F1) for additional instructions.

Bar Code Scanning

Users can scan bar codes when entering identities or semen batches. A built-in camera must be available on the device.

1. Place cursor in identity field
2. Tap on the bar code image next to the identity field; camera will open
3. Center the bar code in the frame the application will read the bar code
4. Once read successfully, the identity will automatically appear in field

Reporting

PigCHAMP Mobile has several action and warning lists available to help with day to day information on the status of a female and for locating in the herd.

Select a report from lists and define any parameters available

For Example:

- Herd Summary
- Sow Details
- Open Sow List
- Sows Due to Farrow

We will be looking forward to your feedback on the available reports and other reporting information you may find useful.

Search

A unique feature that allows you to view the complete event history for a specific female or boar. Here you may also edit and delete events that have been entered incorrectly.

This functionality also provides you with average performance of a female to help with productivity decisions.

Trouble Shooting for Support

To help the team with trouble shooting efforts we recommend that you download and install **Team Viewer Quick Support** from either www.pigchamp.com/support or directly from the App store.



HISTORY	SUMMARY
Av.Gestation Length	116.2
Av.Farrowing Interval	138.25
Av.Farrowing Index	2.64
Av.Total Born	13.60
Av.Liveborn	12.80
Av.Stillborn	0.00
Av.Mummified	0.80
Av.Piglet Losses	0.80
Av.Lactation Length	17.4
Av.Piglets Weaned	11.00
Total Non-Prod.days	204
Av.Non-Prod.days per Parity	40.80