



## **PigCHAMP Mobile Reproductive System**

<b>System Overview .....</b>	<b>2</b>
<b>Mobile Software .....</b>	<b>2</b>
<b>Data Transaction Files.....</b>	<b>3</b>
<b>File Share Options.....</b>	<b>4</b>
<b>PigCHAMP Mobile Data Process.....</b>	<b>4</b>
<b>Hardware Options .....</b>	<b>5</b>
<b>Hardware Requirements .....</b>	<b>6</b>
<b>Personal Computer Requirements .....</b>	<b>6</b>
<b>Mobile Unit Requirements .....</b>	<b>6</b>
<b>Software Requirements .....</b>	<b>6</b>
<b>PigCHAMP Reproductive Requirements.....</b>	<b>6</b>
<b>Recommendations .....</b>	<b>7</b>
<b>Installation User Guides.....</b>	<b>8</b>
<b>User Documentation &amp; Guides .....</b>	<b>9</b>
<b>Mobile Training .....</b>	<b>10</b>
<b>Training Options.....</b>	<b>10</b>
<b>Training Pricing.....</b>	<b>10</b>
<b>Mobile Support .....</b>	<b>11</b>
<b>Technical and Customer Services.....</b>	<b>11</b>

## **System Overview**

The new PigCHAMP Mobile Reproductive system lets you collect data electronically and transfer it easily into the PigCHAMP Reproductive program.

This saves time, eliminates paperwork, and ensures data accuracy. The PigCHAMP Mobile system is designed to work on any device that supports the Windows Mobile platform.

- ❖ PigCHAMP Mobile will run on any device running Windows Mobile 6.0+
- ❖ Integration with the PigCHAMP Reproductive desktop program
- ❖ Data validation in the barns and the ability to edit events at the time of entry helps avoid costly mistakes and ensures data accuracy
- ❖ Options to read standard RFID tags for enhanced speed and accuracy
- ❖ Accommodates data entry for 48 individual events including animal movements, mating, farrowing, health treatments and batch arrivals
- ❖ Security measures for each operator and language toggle options
- ❖ Provides performance reporting and individual sow histories
- ❖ Access daily action lists in the barn, including: Sows Due for Attention, Open Sow List, Sows Due to Farrow and warning lists for Sows not Weaned and Sows not Served

### **Mobile Software**

The PigCHAMP Mobile Reproductive system utilizes two different software programs; the programs work together to enable the users the flexibility that is needed to accurately collect and maintain their daily data activity.

- ❖ PigCHAMP Mobile Manager: Software resides on the personal computer that is located on the farm site. This program has multiple purposes it manages the master mobile database and the licensed mobile unit(s), enables the users to synchronize the mobile unit(s) and update the master mobile database. A daily activity file is generated which will be imported in to the PigCHAMP Reproductive program.
- ❖ PigCHAMP Mobile Software: Software resides on each individual mobile unit. This program allows the users to enter data, validate daily activity logic and provide basic reporting and animal lookups within the barns.

## **Data Transaction Files**

There are two unique transaction files that are used within the PigCHAMP Mobile system, one that transfers the master database to the mobile units and the other that transfers daily activity.

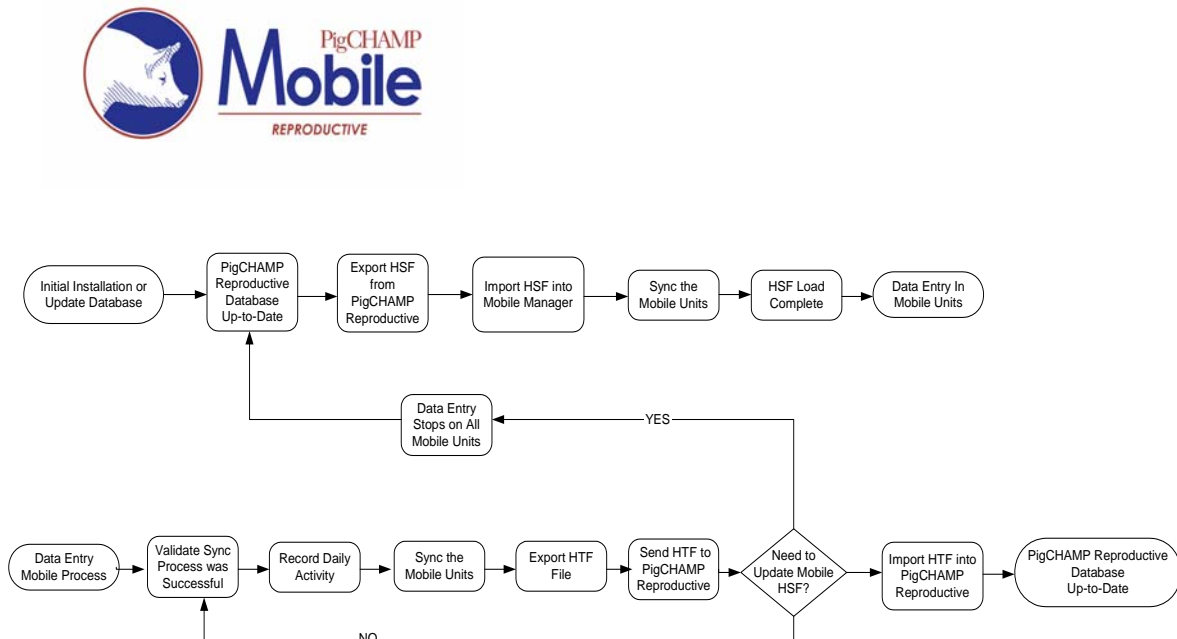
- ❖ Herd Summary File (HSF): This is a farm specific file that is created, exported out of the PigCHAMP Reproductive program and then sent to the farm's personal computer; the file contains the complete history of all active females currently with in the herd and females removed in the past six months.
  - The HSF file is created initially to synchronize (load) the master database onto the mobile units.
  - Periodically there will be a need to re-create a new HSF and to synchronize (load) a new master database onto the mobile units; this will overwrite the entire database located at the farm on the mobile units.
    - The farm data in PigCHAMP Reproductive must be up to date prior to creating the HSF and no additional data can be recorded in to the Mobiles on the farm until after the new HSF has been synchronized with the mobile units.
    - Frequency of sending and importing a HSF; recommend minimum once every quarter to manage the database size that resides on the mobile
    - To determine if an HSF is needed more frequently:
      - The farm receives transferred females from a another farm within the Reproductive database; provide only to farms receiving new females based on the period in which they are received
      - Data has been recorded in the PigCHAMP Reproductive program and not recorded in the mobile; all data and corrections should be recorded directly in the mobile software, this should not be a frequent occurrence
- ❖ Herd Transaction File (HTF): This is a file that is created at the farm after all Mobile units have been synchronized together. The HTF is used to import the data into the PigCHAMP Reproductive database; the file contains all individual events recorded since the last known synchronization.
  - At minimum the file will need to be created once a day usually at the end of the farm day. Users may create these files more frequently if they choose.
  - This file is then sent or saved to a location where the person(s) responsible for updating the PigCHAMP Reproductive program may access it.
  - The file is imported in to the PigCHAMP Reproductive program.

## File Share Options

Users are responsible for establishing a protocol and process for the transmission of the Herd Summary File (HSF) and the Herd Transaction File (HTF). There are many options that can be created based on the infrastructure that is available to the user.

- ❖ E-mail: Files are exchanged via e-mail; it is recommended that a generic e-mail account is created for the HTF files to be sent and all necessary office team members have access to that account
- ❖ FTP: User are able to post and retrieve files to an FTP site account; recommend that each farm has a specific location (folder) that they post to and all necessary office team members have access to that account
  - A script can be created by the user that automates this process
- ❖ Terminal/Network Services: Users are able to save the files directly to a designated location or import directly into the PigCHAMP Reproductive program provided the farm has access to the master PigCHAMP Reproductive database either via a client or login.
- ❖ USB Flash Drives or CD: Users are able to save files to a USB flash drive or write the files to a CD; these are then delivered to the main office where entry occurs.



## PigCHAMP Mobile Data Process



## Hardware Options

Users have the option to purchase the Mobile hardware directly from PigCHAMP or purchase hardware from a third party. To meet requirements all Mobile units must have a Windows Mobile 6 platform.

All brands are compatible with each other; users may mix and match different mobile devices on the same farm to fit their business needs. If you would like to receive product spec sheets on any of the below hardware options listed please notify your sales associate and we will be happy to provide those for you.

Mobile Unit Options	Socket Mobile SOMO 650 Standard	Nautiz X3	Nautiz X5	Psion Workabout Pro G3
Image				
Price Range	\$	\$\$	\$\$\$	\$\$\$\$
Durability	★	★★★	★★★	★★★
Number of Females	>10,000 Females	10,000 +	10,000 +	10,000 +
RFID	GAO RFID Card Bluetooth Wand (Half Duplex Tags Only)	Bluetooth Wand	Bluetooth Wand	Agrident RFID Reader Bluetooth Wand
Data Entry	Touch Screen	Keypad	Keypad	Keypad Numeric or Alpha-Numeric
Physical Dimensions	5 x 2.94 x .98 in	5.9 x 2.6 x 1 in	6.3 x 3.15 x 1.4 in	8.78 x 3.94 x 1.65 in
Charger	Cord Included	Cord Included	Docking Station Included	Not Included
Accessories	Cases	Docking Stations		Hand Straps, Battery, Charger, Docking Station

# Hardware Requirements

## Personal Computer Requirements

- ❖ Windows XP (Pro or Home) with SP3, Windows Vista, Windows 7
- ❖ Network card
- ❖ Minimum 2 GB of free hard drive or higher
- ❖ Minimum Pentium IV Processor or higher
- ❖ Minimum 2GB of memory or higher
- ❖ Minimum of 1 USB Port available
- ❖ CD ROM Drive
- ❖ Wireless Router; Recommend Belkin Router models F7D6301 or F7D7302
- ❖ Internet Access (Optional)

## Mobile Unit Requirements

- ❖ Windows Mobile 6 operating system
- ❖ Minimum 128 MB RAM , 256 or higher recommended
- ❖ Minimum 256 ROM (or flash storage) or higher
- ❖ Wireless Network card
- ❖ Bluetooth capabilities is needed for RFID
- ❖ Power Supply and Data Cable
- ❖ Power strip w/surge protector for multiple units on a single site
- ❖ Additional stylus pens on site

# Software Requirements

## PigCHAMP Reproductive Requirements

- ❖ PigCHAMP Reproductive Version 4.5.4
- ❖ Establish Mobile Users in the “Operators” Lookup Item Management (LIM) per farm
- ❖ Verify that Lookup Items do not contain commas; All Categories

## **Recommendations**

Below are recommendations which are based on previous experiences with Mobile implementations in systems that are similar in size and infrastructure.

### **Mobile Devices**

To determine the number of mobile devices needed per farm we base our recommendations on the number of teams and/or groups that work on the farms.

For example, a farm site has 2 teams that breed every day in the breeding/gestation barn and 2 teams that walk the farrowing barns daily, we would recommend 5; 4 to cover daily activity and 1 extra for the farm manager, heavy breeding and/or heavy wean days.

### **Sow Cards**

With this system we recommend the continuation of hanging summary (sow) cards with in the barns as an additional form of communication for the farm staff.

### **Mobile Awareness**

For the farms that will be receiving the mobiles it is nice to have a meeting to let the Farm Managers know that they have been selected to implement the mobiles. This meeting should focus on the company's expectations of the Farm Managers as well as demonstrate the Mobile program so they will have some familiarity prior to the installation. This can be done via an online conference.

### **Training**

We highly encourage customers to have at minimum 2 to 3 staff members participated in a "train the trainer" program for PigCHAMP Mobile to become "internal experts." By doing so will eliminate additional training costs when the Mobile program is implemented on other farms within the company's organization.

### **Establish Internal Process**

We have provided much of the documentation on "how it works," however each company and in some cases each farm has internal processes that are already established. It is best to review your existing processes to identify if changes in those current processes will be necessary when the PigCHAMP Mobile is introduced onto a farm.

The success of the Mobiles relies on the internal support for the system; to help with this we have found that having processes documented specific to the company that is implementing the new software reinforces and communicates the best practice to be successful.

We suggest that processes are reviewed on the farm and with in the bureau for a period of time to help identify those actions or processes that may need adjustment prior to a full implementation across all farms.

### **Implementation Planning**

The implementation plan becomes the road map that the customer and PigCHAMP, Inc. will follow to insure a successful installation and training of the PigCHAMP Mobile Reproductive system. This plan will outline the expectations, assignments and installation schedule for the Mobile System on each farm selected to implement the handhelds. As a team the customer and PigCHAMP will continue to define the implementation plan based on initial findings to design a system wide implementation plan that is specific to the customer's organization.

# Installation User Guides

## **Installation Preparation**

It is recommended prior to the installation of the PigCHAMP Mobile System you have the information below about the farm scheduled for the mobile installation.

### Computer Configuration

- ❖ On-site computer meets requirements
- ❖ What type of Windows edition is used (XP Home, Windows 7 Premium, Etc.)
- ❖ What type of operating system the computer uses; 32 bit or 64 bit

### Mobile Units

- ❖ The number of mobile units to install
- ❖ Type of mobile units to be installed
- ❖ If RFID is to be used; what reader type is selected to use

### Bio-Security Process; will drive the installation and training timeline

- ❖ The number of farm down days
- ❖ Bio-security flow

## **Installation Mobile Guide**

The installation of the PigCHAMP Mobile system is a very detailed process; the installation guide walks users through step by step for a successful installation. Please refer to the Mobile Installation Guide for the specific instructions.

## **RFID Installation Guides**

The installation of RFID readers is dependent upon the type of reader(s) and the type of mobile unit(s) that will be used on the farm.

## **Licensing the Mobile Units**

Once the PigCHAMP Mobile Manager is installed on the computer at the farm, the user will need to license the software. This license is specific to the computer and number of mobiles that will be assigned to the location.

The license registration key will need to be e-mailed directly to [reg@pigchamp.com](mailto:reg@pigchamp.com)

After the initial start-up year, the Mobiles will be licensed annually based on the PigCHAMP Reproductive annual renewal date.

Payment must be received prior to licensing.



# **User Documentation & Guides**

## **Preparing PigCHAMP Reproductive**

This document will walk users through the steps needed to prepare the PigCHAMP Reproductive program to work with the PigCHAMP Mobile Reproductive system. Some of the items will be specific to the entire PigCHAMP database and will only need to be done for the first initial farm.

Establishing users for the Mobiles is done through the PigCHAMP Reproductive program and will be farm specific.

## **Mobile User Guide**

This User Guide is designed to assist users with using the PigCHAMP Mobile application on the mobile device(s) once installation has been completed. The guide describes all Mobile software features in detail and provides users with image examples as an additional reference.

## **Synchronization Reference Guide**

This reference guide outlines the various procedures when synchronizing the mobiles at the farm. It is a quick way for the farm staff to validate that all steps have been followed.

## **Interpreting the Herd Transaction File (HTF)**

This documentation provides examples and codes on how to interpret the daily transaction files created at the farm. These documents are geared towards office personnel.

## **Interpreting PigCHAMP Import Log Files**

This documentation provides examples and explanations on how to interpret the error and warning logs created after data has been imported into PigCHAMP. This document is geared towards office personnel.

## **Updating PigCHAMP Mobile Software**

A one page guide stepping users through updating the PigCHAMP Mobile software.

## **Hardware Reboot**

Guides have been created to help users through the process of performing a soft reboot on the mobile devices if needed. These guides are specific to the make and model of the mobile device. If the mobile hardware is a unit not offered by PigCHAMP the user will need to refer to the specific user guide of that unit for these instructions.

# Mobile Training

At PigCHAMP, we understand that learning a new software program can be challenging. Because of this, we have created a Mobile training program that provides options that allows us to work directly with farm production and data entry staff, to ensure a successful implementation of the PigCHAMP Mobile Reproductive system with in your organization.

## Training Options

The trainer assigned will work very closely with your organization to design a training program that is specific to your needs; from installing the hardware and software all the way through data entry on the mobile units in the barns.

As a guide we have outlined the various training packages offered and have provided hourly estimates for each type of training.

Hardware Setup and Software Installation; Estimated Hours: 3-3 1/2

- ❖ Assembly of Hardware (RFID, Protective Cases etc.)
- ❖ Setup of Wireless Routers
- ❖ Configure All Mobile Devices
- ❖ Installation of Mobile Manager on the farm computer and PigCHAMP Mobile on the mobile devices.

Mobile Training On-Site; Estimated Hours: 5-8

- ❖ Detail Introduction of Features and Functionality
- ❖ Hands-On (In Barn) Experience
- ❖ Synchronization Process
- ❖ Data Exchange and/or Import/Export Process

Office Training for Data Exchange; Estimated Hours: 2-4

- ❖ PigCHAMP Reproductive Program Mobile Setup
- ❖ Import/ Export Process
- ❖ Validations and Notes
- ❖ Data Exchange
- ❖ Overview of Mobile Features

## Training Pricing

On-site training with a PigCHAMP Mobile expert can be arranged for an hourly rate or a daily rate, plus any travel expenses that occur.

# Mobile Support

PigCHAMP is in a unique position as compared to other software companies in that we can offer a very experienced and professional Technical Support and Customer Service staff. We are committed to providing the best support in the industry. Throughout the implementation process, PigCHAMP will ensure the highest degree of support.

## **Technical and Customer Services**

PigCHAMP will assign one individual to be responsible for receiving feedback and to coordinate supporting activities. Think of this individual as your personal PigCHAMP Customer Service Representative.

### During the Implementation process

- ❖ Weekly Support Phone Calls

### After Implementation is complete

- ❖ Support Phone Calls
  - Weekly for 1 Month
  - Bi-Weekly for 2 Months

### On-going Support

- ❖ Technical Support Package
  - User Guides and Manuals
  - Toll-free Support and Free on-line FAQ access
  - Internet ILink/ Team Viewer Support