



# PigCHAMP > Grow-Finish

THE POWER OF KNOWLEDGE




The **PigCHAMP Grow-Finish** program gives you the broadest range of options for managing and improving your grow-finish operation. When used in tandem with PigCHAMP Reproductive, you have all the tools you need to successfully manage your farrow-to-finish operation.

## ⌚ PRECISE DECISIONS WITH REAL-TIME INFO

- View reports with finishing information on a daily basis
- Analyze your operation's performance before groups are completed
- Manage feed budgets, rations, and invoices
- Break down expenses by group, farm or individual pig
- Monitor medication inventories and withdrawal periods

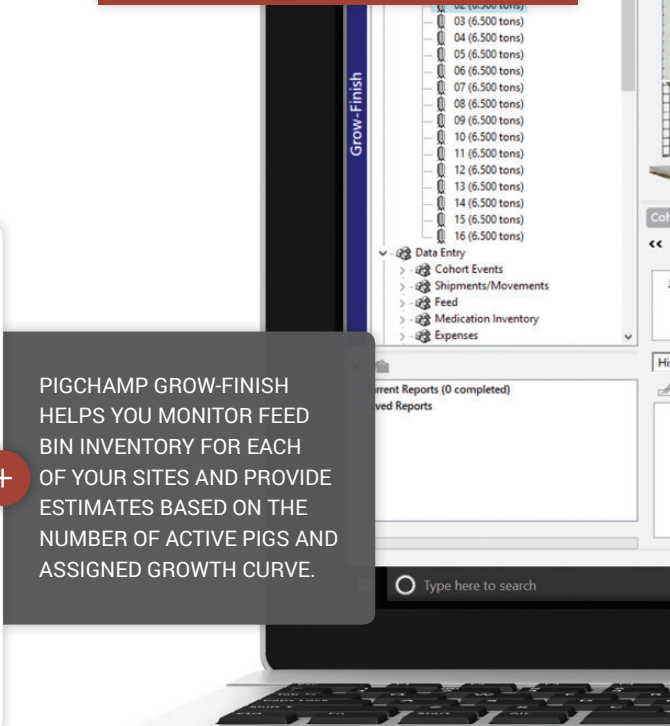
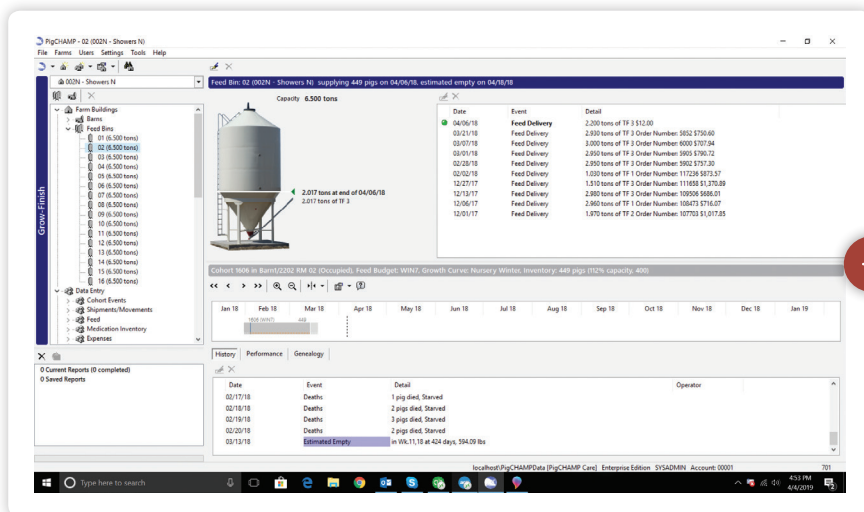
## 📊 ANALYZE RESULTS TO IMPROVE PROFITABILITY

- Compare locations, groups or whole farm progress, productivity, and profitability
- Easily share information with veterinarians and nutritionists



### FEATURES

- › Location Availability and Reservations
- › Group Closeout and Real-Time Activity
- › Inventory and Death Loss
- › Expense Reporting
- › Feed Usage and Bin Activity
- › Sales, Shipments and Sales Planning





# PigCHAMP › Grow-Finish

THE POWER OF KNOWLEDGE



## PLAN FOR TOMORROW

- Plan for group placements days, weeks or months in advance
- Sales planning reporting projects timing of sales shipments

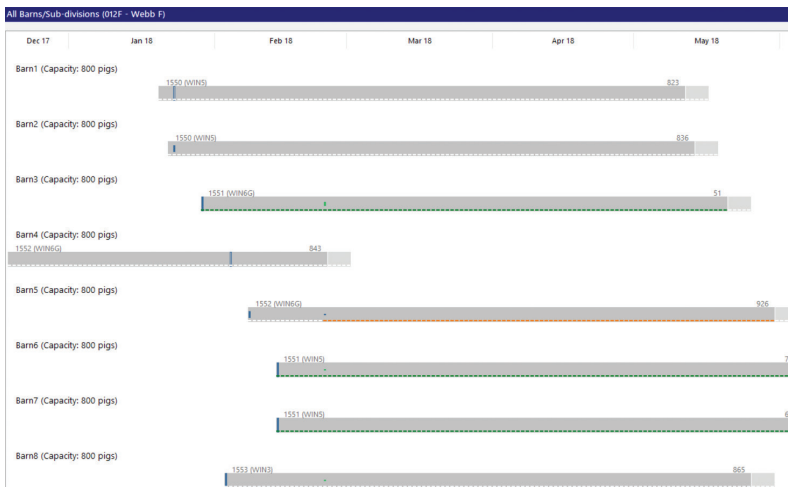
### Cohort Summary Report

Farm: All Farms  
Run on 08-Apr-19  
Cohort: 1550



Inventory		Av.Inventory (Utilization): 732 (92%)		820 sq ft/pig	
<b>Pigs In</b>					
Placement	Source (Ticket) - Cohort	Date	Pigs	Av.Age(days)	Av.Weight (lbs)
	007N - Elm N - 1550	01/10/18	747	792.6	780.65
			<b>747</b>	<b>792.6</b>	<b>780.65</b>
<b>Pigs Out</b>					
	Destination (Ticket) - Cohort/Tattoo	Date	Pigs	Av.Age(days)	Av.Weight (lbs)
Sale (Market)	Farmland NE - 3370	04/29/18	175	901.6	998.65 <sup>2</sup>
Sale (Market)	Farmland NE - 3352	04/29/18	179	901.6	998.65 <sup>2</sup>
Sale (Market)	Farmland NE - 3354	04/29/18	179	901.6	998.65 <sup>2</sup>
Sale (Market)	Farmland NE - 7781	05/01/18	49	903.6	1002.65 <sup>2</sup>
Sale (Market)	Farmland NE - 7780	05/01/18	128	903.6	1002.65 <sup>2</sup>
Sale (Cull)	Weichman IA - G345	05/01/18	30	903.6	280.39
			<b>740</b>	<b>902.2</b>	<b>970.49</b>
<b>Deaths</b>			<b>7</b> (0.96%)	<b>818.6</b>	<b>832.65</b>
Reconciliation			<b>0</b>		

VIEW YOUR FARMS DATA IN A NUMBER OF DIFFERENT FORMATS, SUCH AS GRAPHS, CHARTS AND LISTS.



BARN DASHBOARD LETS YOU SEE THE CURRENT ACTIVITY TO ASSIST YOU IN SCHEDULING CAPACITY. CUSTOMIZE WITH DEATHS, MEDICATIONS, AND NOTES AS DESIRED.

