



PigCHAMP › Grow-Finish

Proven. Premier. PigCHAMP.

The Power of Knowledge

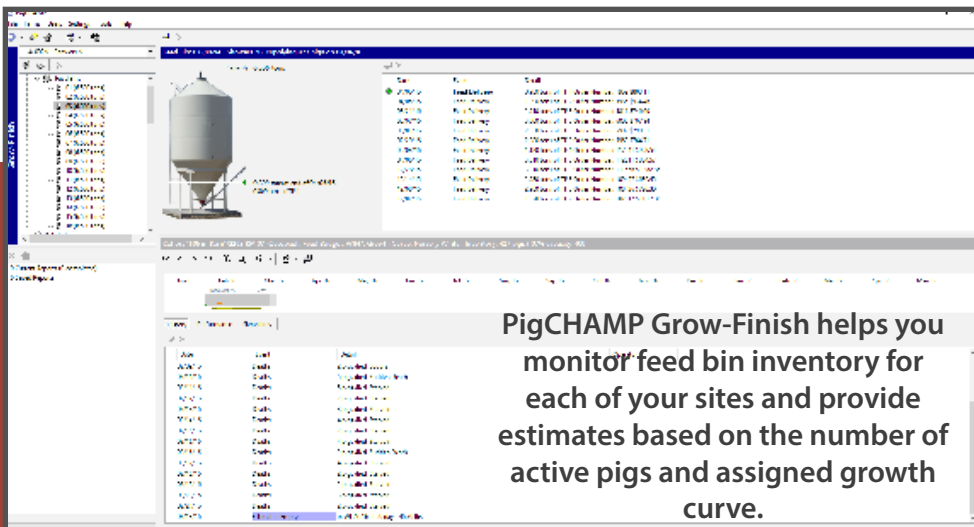
The PigCHAMP Grow-Finish program gives you the broadest range of options for managing and improving your grow-finish operation. When used in tandem with PigCHAMP Reproductive, you have all the tools you need to successfully manage your farrow-to-finish operation.

Precise Decisions with Real-Time Info

- View reports with finishing information on a daily basis
- Analyze your operation's performance before groups are completed
- Manage feed budgets, rations, and invoices
- Break down expenses by group, farm or individual pig
- Monitor medication inventories and withdrawal periods

Analyze Results to Improve Profitability

- Compare locations, groups or whole farm progress, productivity, and profitability
- Easily share information with veterinarians and nutritionists



PigCHAMP Grow-Finish helps you monitor feed bin inventory for each of your sites and provide estimates based on the number of active pigs and assigned growth curve.

Setting the Standard in Production Reporting

Location Availability and Reservations

Group Closeout and Real-Time Activity

Inventory and Death Loss

Expense Reporting

Feed Usage and Bin Activity

Sales, Shipments and Sales Planning



PigCHAMP › Grow-Finish

Proven. Premier. PigCHAMP.

Plan For Tomorrow

- Plan for group placements days, weeks or months in advance
- Sales planning reporting projects timing of sales shipments

View your farms data in a number of different formats, such as graphs, charts and lists.

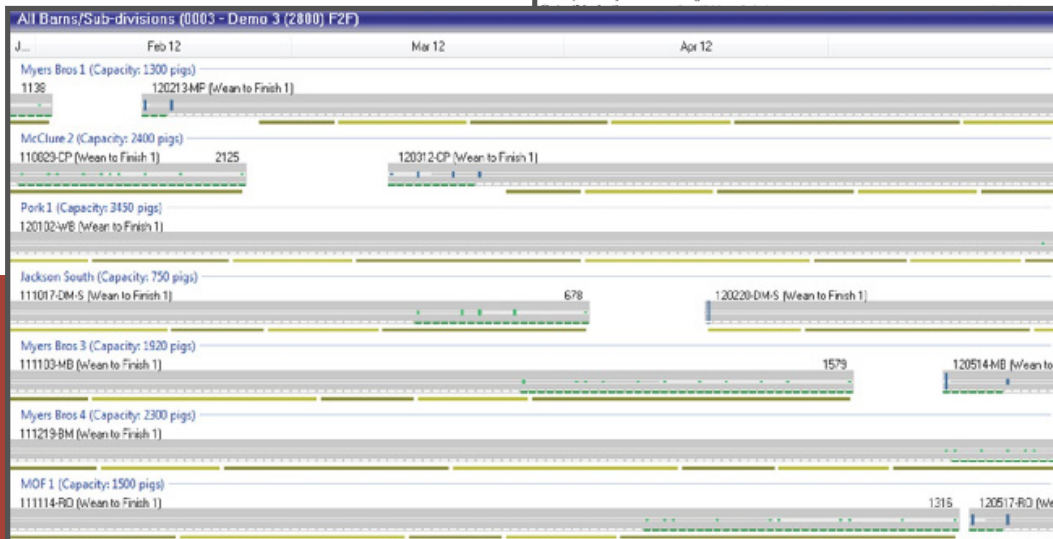
Cohort Summary Report

Farm: 0003 - Demo 3 (2800) F2F
Run on
Cohort: 111103-MB

Myers Bros 3 (Closed) Capacity (Pig Spans): 1920 (0) Area: 14206 sq ft

Av. Inventory (Utilization): 1579 (82%) 9.00 sq ft/pig

Pigs In		Date	Pigs	Av. Age(days)	Av. Weight (lbs)	Value
Placement	Farm 2 (111103MB)	11/03/11	1527	18.0	13.00	\$64,134.00
Placement	Farm 2 (111103MB)	11/16/11	323	18.0	13.00	\$13,566.00
			1850	18.0	13.00	\$77,700.00
Pigs Out		Date	Pigs	Av. Age(days)	Av. Weight (lbs)	Value
Sale (Market)	Cargill Meat Solutions	03/27/12	174	160.7	278.00	\$31,906.26
Sale (Market)	Cargill Meat Solutions	03/27/12	174	160.7	278.00	\$32,027.41
Sale (Market)	Cargill Meat Solutions	04/02/12	175	168.7	267.00	\$31,263.94
Sale (Cull)	Perfos Livestock	04/03/12	11	167.7	185.00	\$2,415.55
Sale (Market)	Cargill Meat Solutions	04/03/12	56	167.7	270.00	\$10,131.01
Sale (Market)	Cargill Meat Solutions	04/05/12	94	169.7	277.00	\$17,886.95
Sale (Market)	Cargill Meat Solutions	04/05/12	81	169.7	271.00	\$15,129.31
Sale (Market)	Cargill Meat Solutions	04/09/12	171	173.7	277.00	\$33,258.79
Sale (Market)	Cargill Meat Solutions	04/12/12	105	176.7	273.00	\$20,326.86
Sale (Market)	Cargill Meat Solutions	04/16/12	175	180.7	267.00	\$32,247.02
Sale (Market)	Cargill Meat Solutions	04/19/12	75	183.7	301.00	\$15,327.34
Sale (Market)	Cargill Meat Solutions	04/23/12	46	187.7	271.00	\$8,897.03
Sale (Market)	Cargill Meat Solutions	04/26/12	57	190.7	265.00	\$9,454.79
			1746	176.2	272.91	\$317,341.76
			104 (6.42%)	124.7	172.68	0



Barn dashboard lets you see the current activity to assist you in scheduling capacity. Customize with deaths, medications, and notes as desired.